

changing the lives  
of adults with  
learning disabilities  
forever.



Your guide to:  
**ALGORES WAY**

[www.thehelpinghandsgroup.org.uk](http://www.thehelpinghandsgroup.org.uk)





# Algores Way, Our little hideaway in the Fens

Algores Way is situated in Wisbech, the capital of the Fens.

The centre, which is set across 2 floors, is blessed by large rooms a secure gated compound and a very large sensory garden.

2021 saw a huge financial investment put into Algores Way, both inside and out, as we look to take full advantage of the vast amount of space that the centre has to offer.

The Sensory Garden to the rear has created quite a stir, offering a large lawned area for recreational activities, 2 adult disability swings including one which is wheelchair accessible. A sunken trampoline, large raised planters and a very funky caravan which we are turning into an area of calm, all combine to create an area fitting of any need.

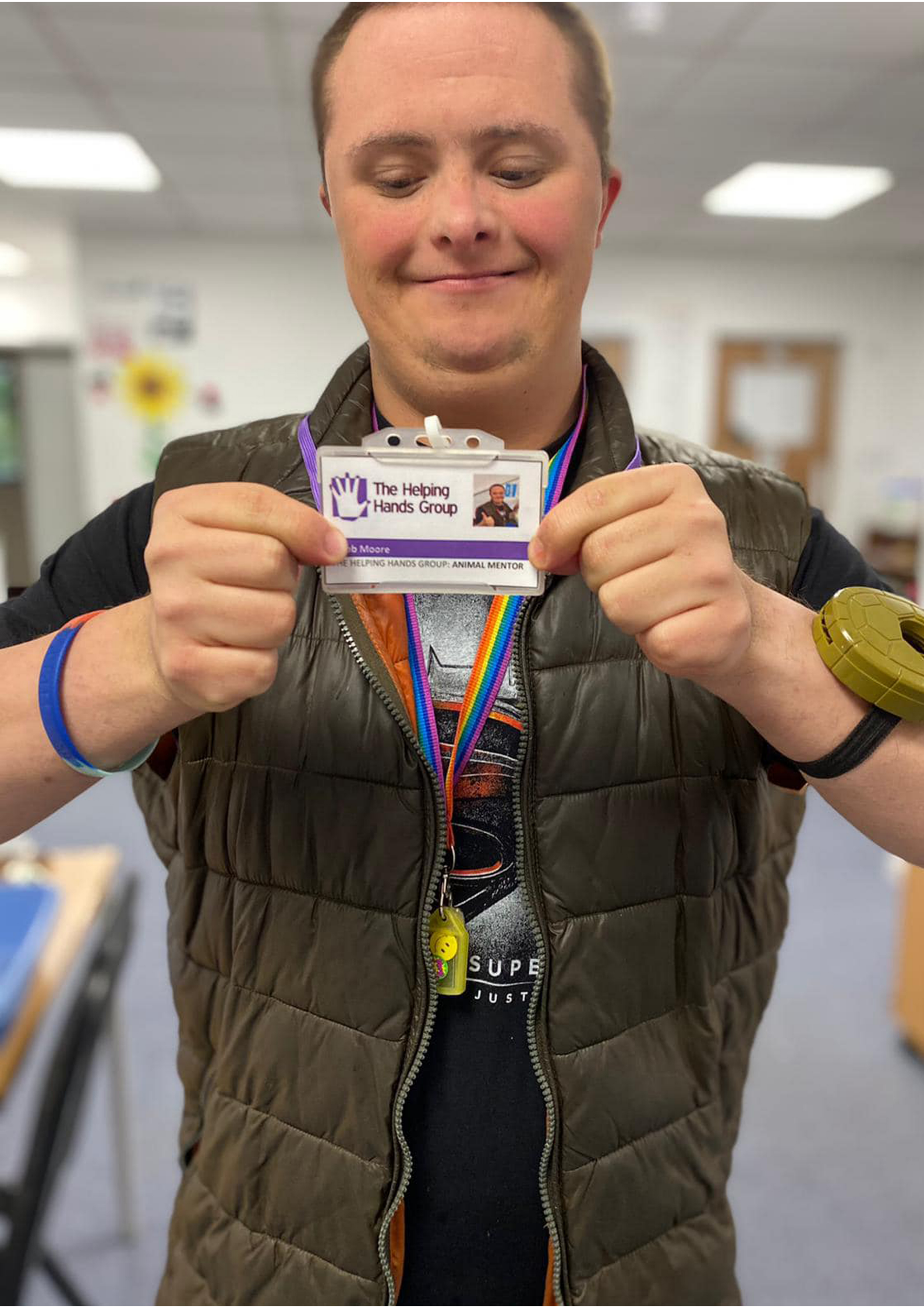
The Helping Hands Group are renowned for our tailor made timetables focused solely on the individual, we feel this provides the stepping stones in building confidence and independence whilst offering new experiences along the way.

Those who attend Algores Way will also have the opportunity to access our other centres which offer such sessions as Catering, Work Experience, Wood Work and even Hydrotherapy from our very own self contained Hot Tub at Charford House.

We look forward to welcoming you at Algores Way.

**SENSORY, PSD  
UP-CYCLING, ICT,  
FOOD TECH,  
ARTS & CRAFTS,  
OFFICE SKILLS,  
ANIMAL CARE,  
HORTICULTURE,  
MUSIC, BAKING,  
WORLD OF WORK,  
FITNESS, SPORT,  
EDUCATION,**

NUMERACY,  
PERFORMING  
ARTS, PARACHUTE  
GAMES, EXERCISE,  
EDUCATION, CAR  
VALETING, LIFE  
SKILLS,  
LANGUAGE &  
COMMUNICATION,  
REMOTE SWITCH  
WORK, + more



The Helping Hands Group

b Moore

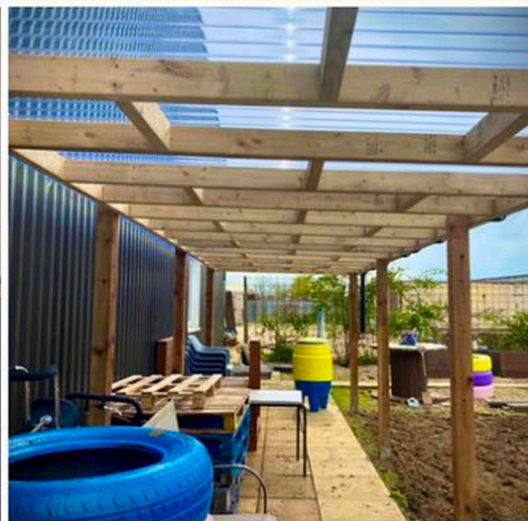
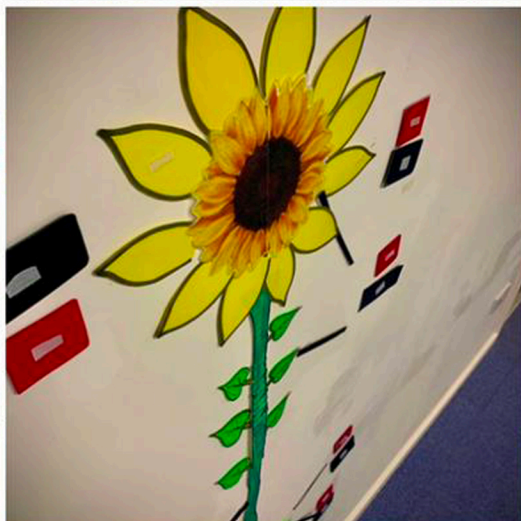
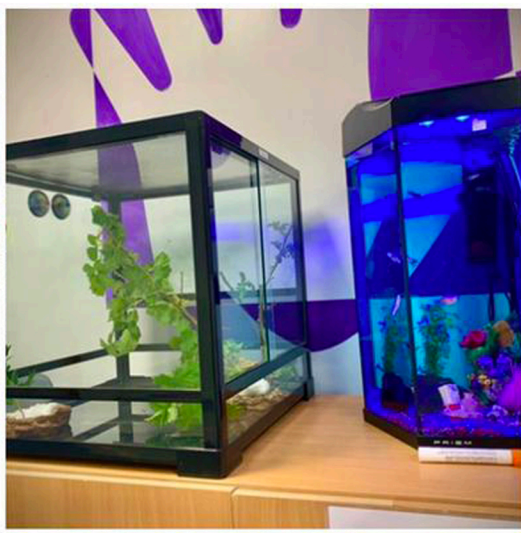
THE HELPING HANDS GROUP: ANIMAL MENTOR

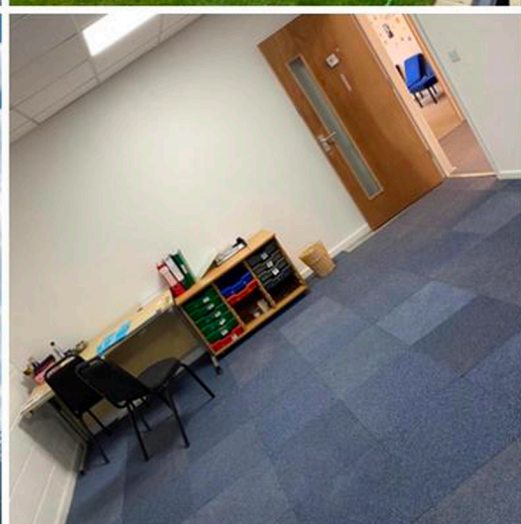
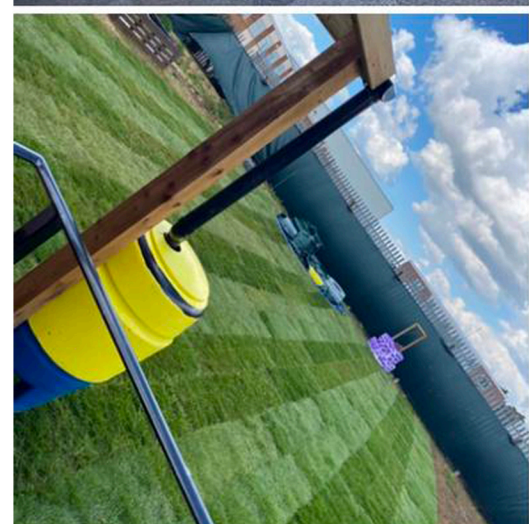
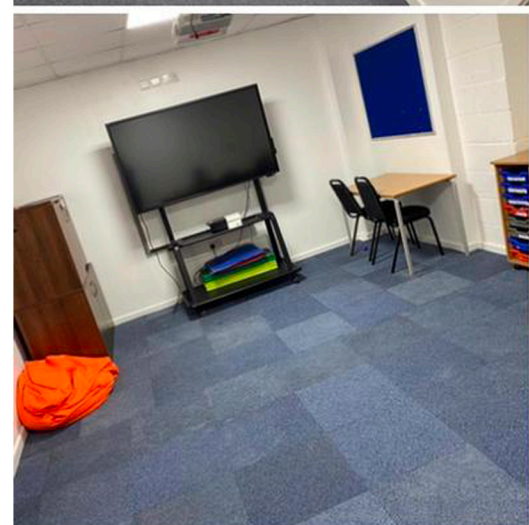
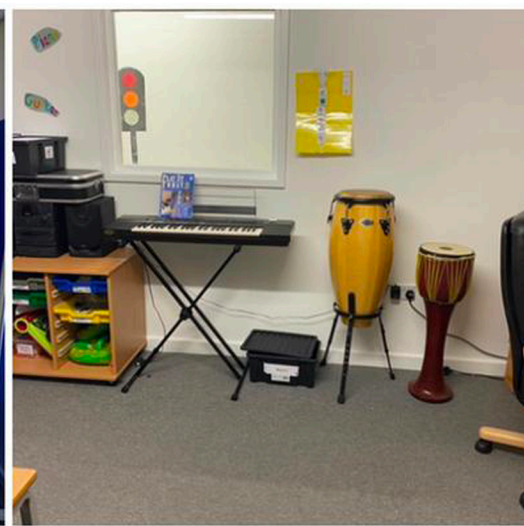
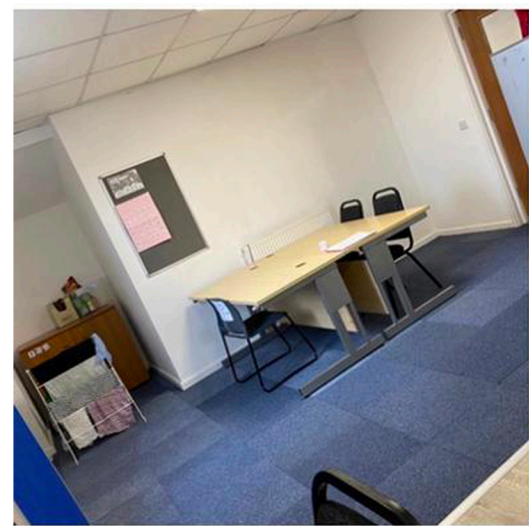
SUPE  
JUST





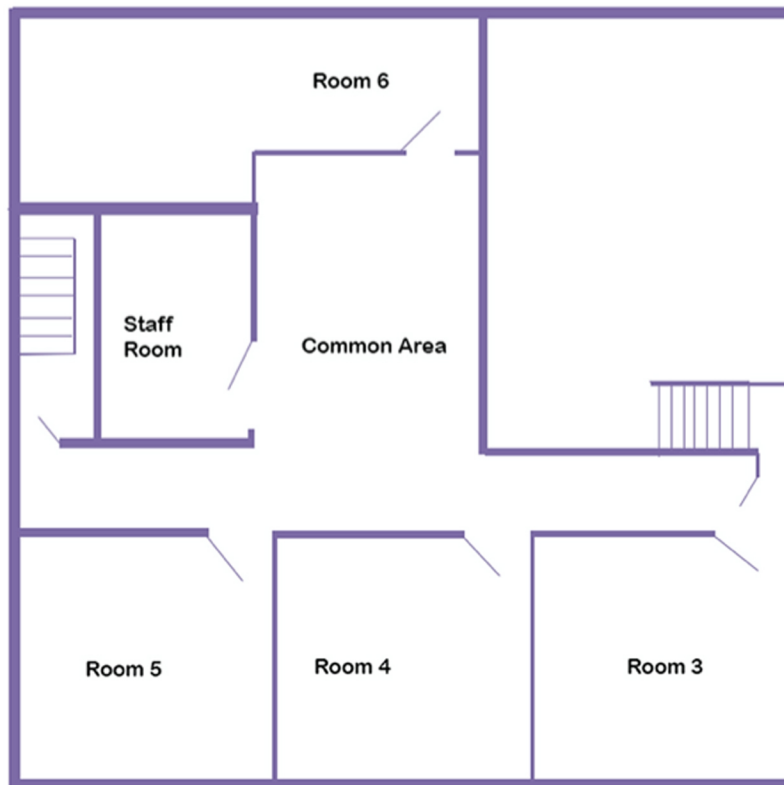




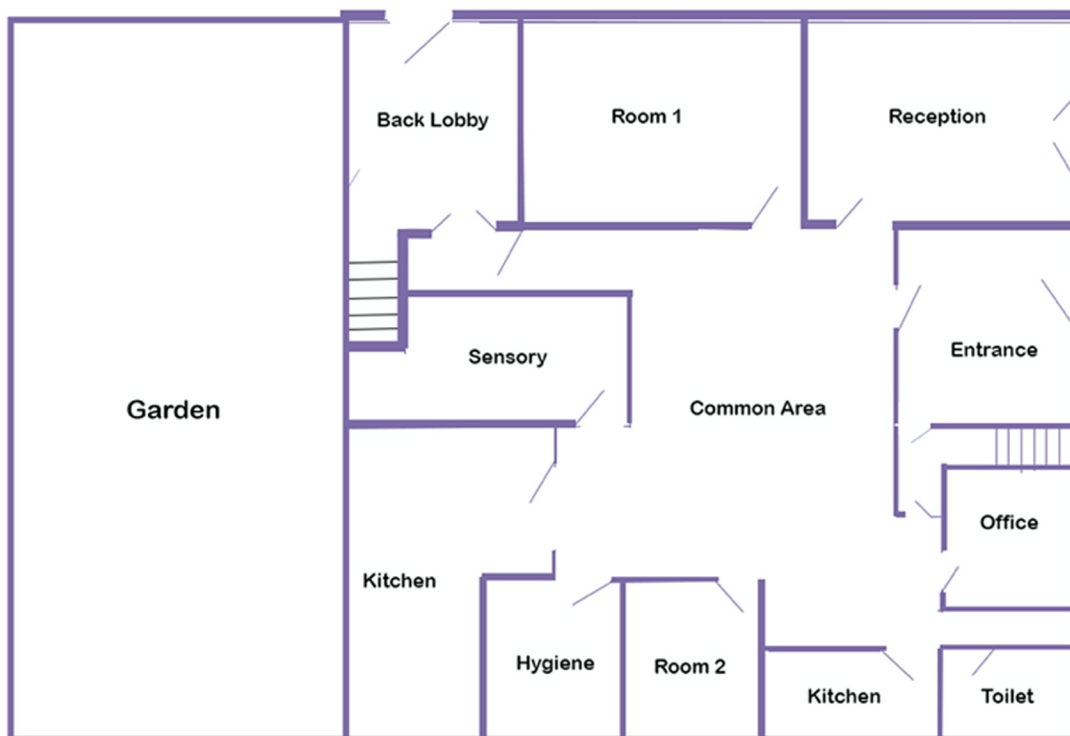


# HHG WISBECH

## First Floor



## Ground Floor



# CONTACT

The Helping Hands Group  
10 Algores Way  
Wisbech  
PE13 2TQ

email: [info@thhg.org.uk](mailto:info@thhg.org.uk)  
tel: 01945 589424

